

INTEX®

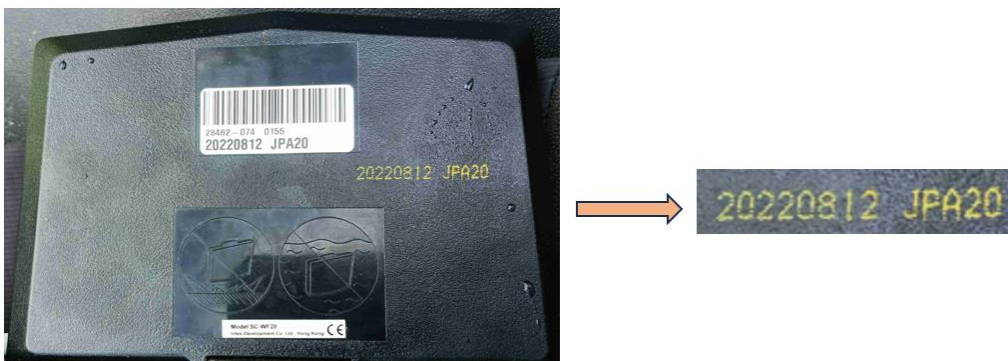
WiFi connection – new app

In case you are owner of INTEX spa with remote control via app, you first need to check which spa model (rep. which type of control panel) you keep. Based on model type you have to select correct app version for download.

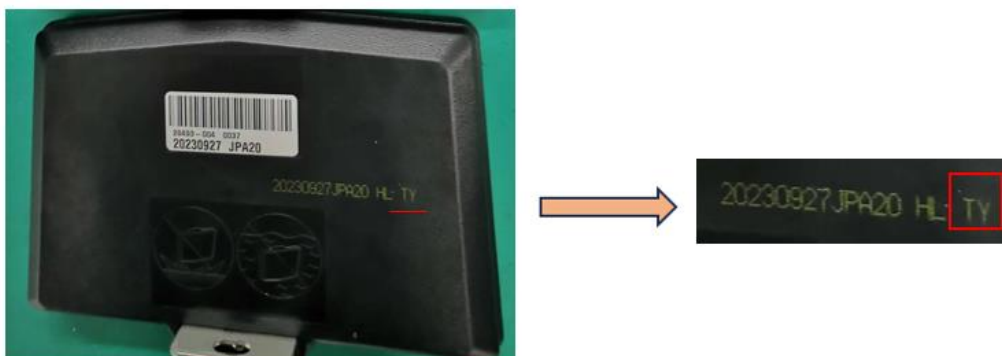
Procedure:

Take the control panel in hand, check the backside of the panel and see which code is printed on it – see pictures below:

The code **doesn't contain** capital letters „TY“ - connect the spa with help of app nr. **1**.



The **code ends with** capital letters „TY“ – connect the app with help of app nr. **2**.





WiFi connection – new app

App for **IOS** system:

1. App **INTEX Link – Spa Management** (app keeps dark background)
2. App **INTEX Link (NEW)** (app keeps light background)

App for **Android** system:

1. App **INTEX Link – Spa Management (Intex Development Co Ltd)** (app keeps dark background)
2. Aplikace **INTEX Link (Intex Development Co Ltd)** (app keeps light background)

Important: the panel must be fully loaded and protective foil must be removed from the screen of the panel before the pairing start.

If your problem still persists, please contact our service center directly:
servis@intexcorp.cz.