

INTEX® OWNER'S MANUAL FISHING TUBE

IMPORTANT

**THIS BOOKLET CONTAINS IMPORTANT SAFETY
INFORMATION. READ IT THOROUGHLY BEFORE USING
THIS PRODUCT AND KEEP IT FOR FUTURE REFERENCE.**

Due to a policy of continuous product improvement, Intex reserves the right to change specifications and appearance, which may result in updates to the instruction manual, without notice.

INTEX®

©2024 Intex Marketing Ltd. - Intex Development Co. Ltd. - Intex Recreation Corp. All rights reserved/Tous droits réservés/Todos los derechos reservados/Alle Rechte vorbehalten. Printed in China/Imprimé en Chine/Impreso en China/Gedruckt in China.
®™ Trademarks used in some countries of the world under license from®™ Marques utilisées dans certains pays sous licence de/Marcas registradas utilizadas en algunos países del mundo bajo licencia de/Warenzeichen verwendet in einigen Ländern der Welt in Lizenz von/
Intex Marketing Ltd. to/à/a/an Intex Development Co. Ltd., Hong Kong & Intex Recreation Corp., P.O. Box 1440, Long Beach, CA 90801 • Distributed in the European Union by/Distribué dans l'Union Européenne par/Distribuido en la unión Europea por/Vertrieb in der Europäischen Union durch/Intex Trading B.V., Ettenseweg 46, 4706 PB Roosendaal - The Netherlands • Distributed in the UK by
Unitex Service (UK) Limited, 21 Holborn Viaduct, London EC1A 2DY, UK.
www.intexcorp.com

096-*A*-R0-2509

TABLE OF CONTENTS

**96
A**

WARNING.....3

DESCRIPTION.....4

FISHING TUBE ASSEMBLY.....5-7

INFLATING INSTRUCTIONS.....8

FISHING ROD HOLDER USE.....8

SKEG INSTALLATION AND REMOVAL.....8

SEAT INSTALLATION.....9

OAR ASSEMBLY.....9

CARRY STRAP INSTALLATION.....9

DEFLATION.....10

SAFETY AND OPERATING INSTRUCTIONS.....10

CARE AND MAINTENANCE.....11

DISASSEMBLY AND STORAGE.....11

TROUBLESHOOTING.....11

REPAIRS.....11

LIMITED WARRANTY.....12

SAVE THESE INSTRUCTIONS

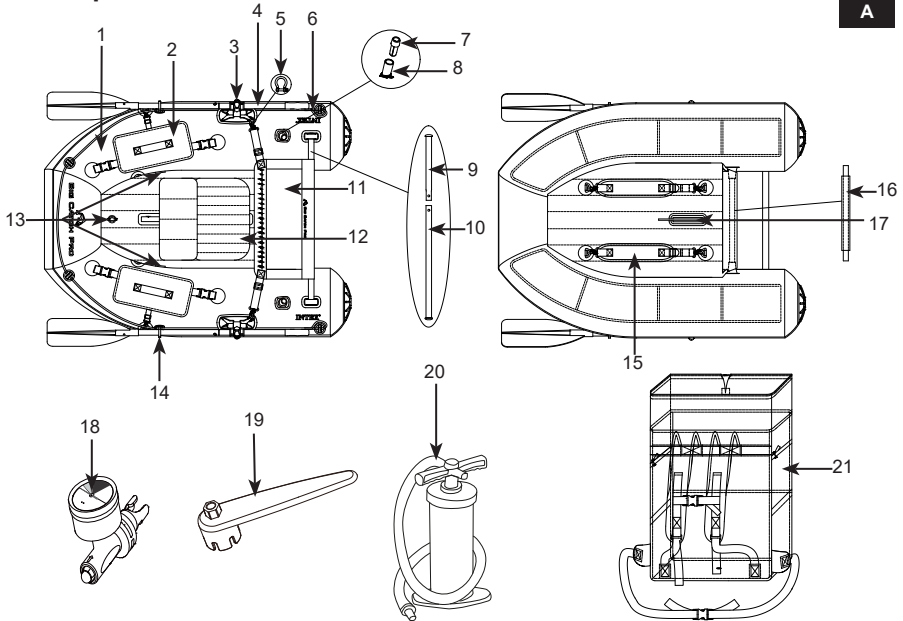


WARNING

- This is not a life saving device. Use only under competent supervision. Never allow diving into this product. Never leave in or near the water when not in use. **Never tow from any vehicle.**
- Read the complete Owner's Manual before use and store this Manual in a safe place for future reference.
- Follow all the Safety and Operating Instructions on this Manual.
- Product propelled exclusively by manual means. Do not attach a motor.
- **Beware of offshore winds and currents.** Never navigate alone.
- Do not exceed the maximum recommended capacities. Overloading violates regulations.
- Everyone on board must wear a Personal Flotation Device (PFD).
- Use caution when stepping or climbing aboard the product. Step into the center of the product for maximum stability.
- Distribute the weight of passengers, gear, tackle box, and accessories so that the product sits level fore (front) to aft (back) and side-to-side.
- Do not use the product if you suspect a puncture or leak.
- Adults should inflate the chambers in numbered sequence.
- Not for white water rafting or any other extreme sports activities.
- Not for commercial or rental use.
- Follow these rules to avoid drowning, paralysis or other serious injuries.

* For a full and complete description of each safety information symbol and safety sign printed on the product and the packaging please refer to the "Definition" section.

SAVE THESE INSTRUCTIONS

Description**96
A**

NOTE: Drawings for illustration purpose only. Actual product may vary. Not to scale.

REF.NO.	DESCRIPTION	QTY.	SPARE PART NO.
1	Boat body	1	13463
2	Fishing storage bag	2	13514
3	Oar lock	2	/
4	54" Oar	2	10062D
5	Mesh ruler connector	2	13529
6	Safety rope	1	13528
7	End cap	2	13014G
8	Fishing rod holder	2	13013G
9	Short "2-piece mounting pipe"	1	13462
10	Long "2-piece mounting pipe"	1	13461
11	Mesh ruler	1	13457
12	Seat	1	13459
13	Air valves	3	/
14	Oar holder	2	/
15	Carry strap	2	13513
16	Floor hull pipe	1	13460
17	Skeg	1	12181
18	Pressure gauge	1	12763
19	Wrench	1	11742A
20	Manual air pump	1	/
21	Backpack	1	13458

SAVE THESE INSTRUCTIONS

Fishing Tube Assembly

Locate a clean area free of stones or other sharp objects.

96
A



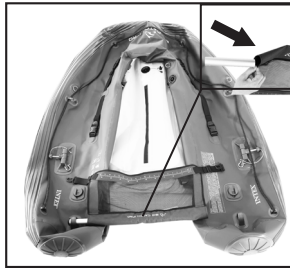
1. Unfold the product.



2. Locate the "2-piece mounting pipe": composed of one long and one short pipe. Insert the long pipe through one side of the hull mounting hole.



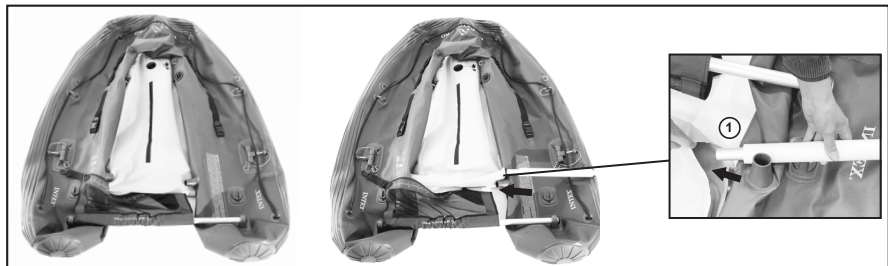
3. Unfold the "mesh ruler" with the sleeve edge facing the long "2-piece mounting pipe".



4. Insert the long "2-piece mounting pipe" into the mesh ruler sleeve.



5. Insert the short "2-piece mounting pipe" through the other side of the hull mounting hole and into the long piece mounting pipe. Make sure the spring button is locked in place.



6. Insert the "floor hull pipe" with foam into the floor edge sleeve.

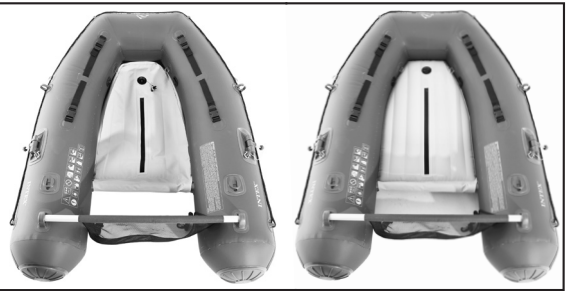
SAVE THESE INSTRUCTIONS



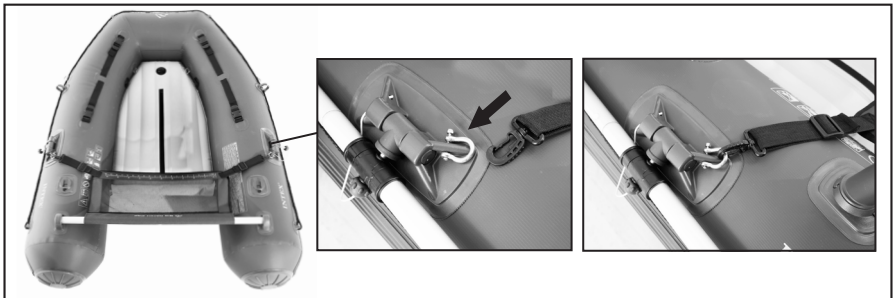
7. Insert the "floor hull pipe" into the left and right mounting fixtures.



8. Make sure the "floor hull pipe" is securely inserted into the mounting fixtures during inflation. **NOTE:** the "floor hull pipe" will stay in place after the hull is fully inflated.

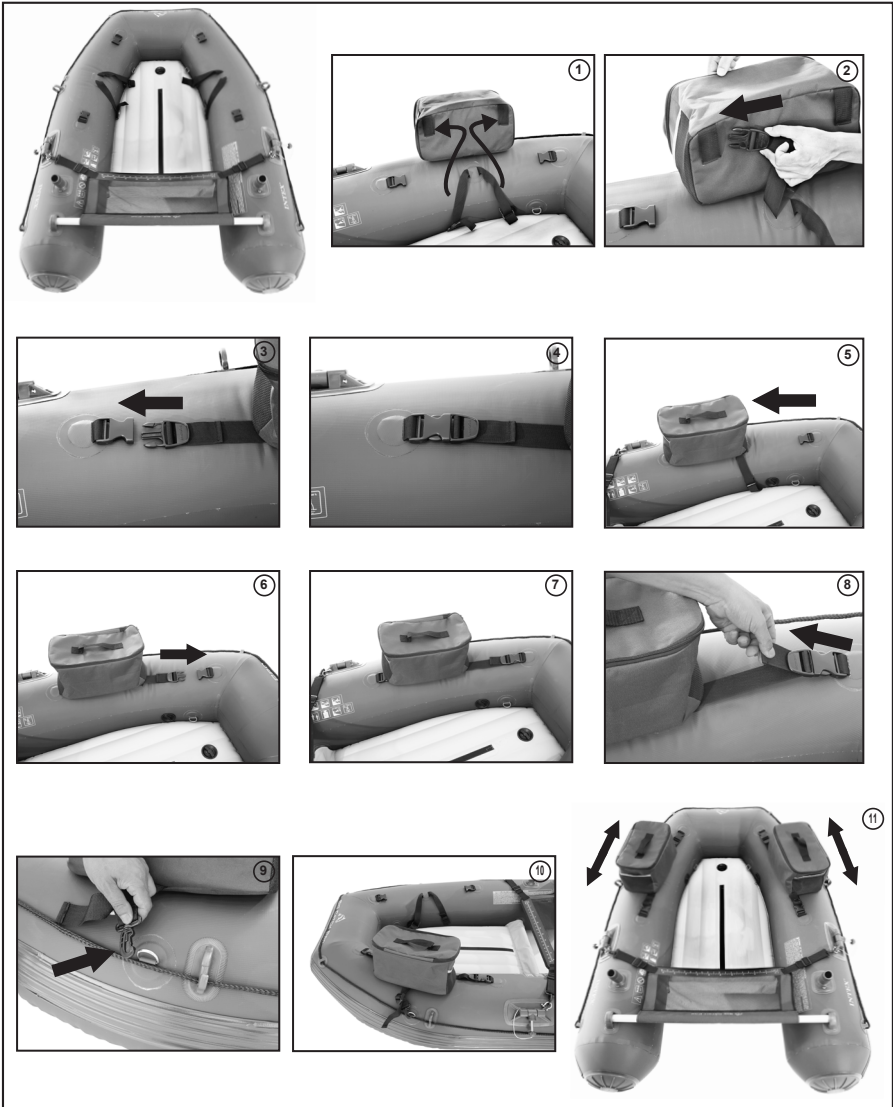


9. Inflate the air chambers and floor following the numerical sequence marked next to the air valves. See "Inflating Instructions" section for details.



10. Hook the mesh ruler straps to the D-rings. Adjust the straps length and the mesh ruler.

SAVE THESE INSTRUCTIONS



11. Assemble the storage bags following above sequence, and adjust the position of the storage bags as needed.

SAVE THESE INSTRUCTIONS

Inflating Instructions

96
A

Use a hand or foot operated air pump to inflate the product. Do not use high-pressure air compressors. Adults should inflate the chambers following the numerical sequence marked on the valves. It is very important to follow the numerical sequence; failure to do so will result in an improperly inflated product. Fill each chamber until it is stiff to the touch but NOT hard.

Use the enclosed pressure gauge to check the main chamber for proper inflation. The pressure gauge indicator should be in the green area for a properly inflated chamber. DO NOT OVER INFLATE. Fill with cold air only.

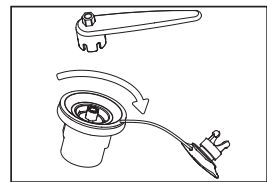
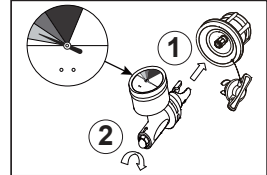
IMPORTANT: Air temperature and weather condition do affect the internal air pressure of inflatable products. In cold weather the product will lose some pressure due to the fact that the air will contract. If this occurs, you may want to add a little air to the product. However, in hot weather, the air will expand. If this occurs, the "air pressure release valve" will automatically release excess air when the internal pressure is between 1.4-1.8psi (0.097-0.124bar).

Air Valve Fastening

Check the air valve for leakage and tightness before use. If air is leaking from the air valve, use the provided wrench to tighten the air valve as follow:

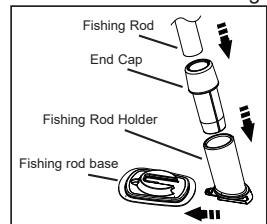
1. Make sure the product is deflated, open the air valve cap and insert the wrench into the air valve body.
2. With one hand, hold the backside of the air valve base from the inside of the product and turn the wrench clockwise.

IMPORTANT: Never adjust the air valve base when the product is in use. Only use the air valve wrench if the air valve is loose or there is leakage around air valve base. Do not over tighten the air valve: over tightening can damage the valve. Just ensure the air valve is snug and not leaking.

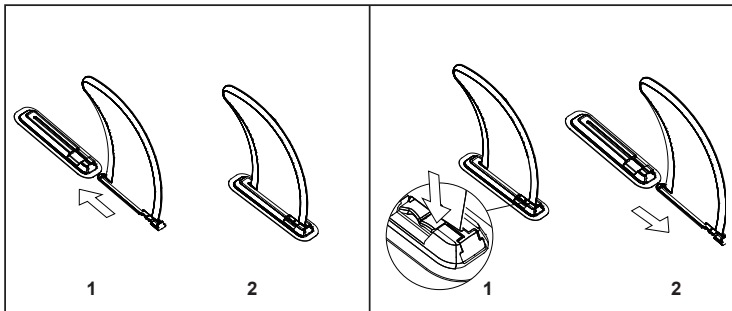


Fishing Rod Holder Use

1. Slide the fishing rod holder into the mounting base.
2. Insert the end cap into the fishing rod holder.
3. Insert the fishing rod into the end cap.



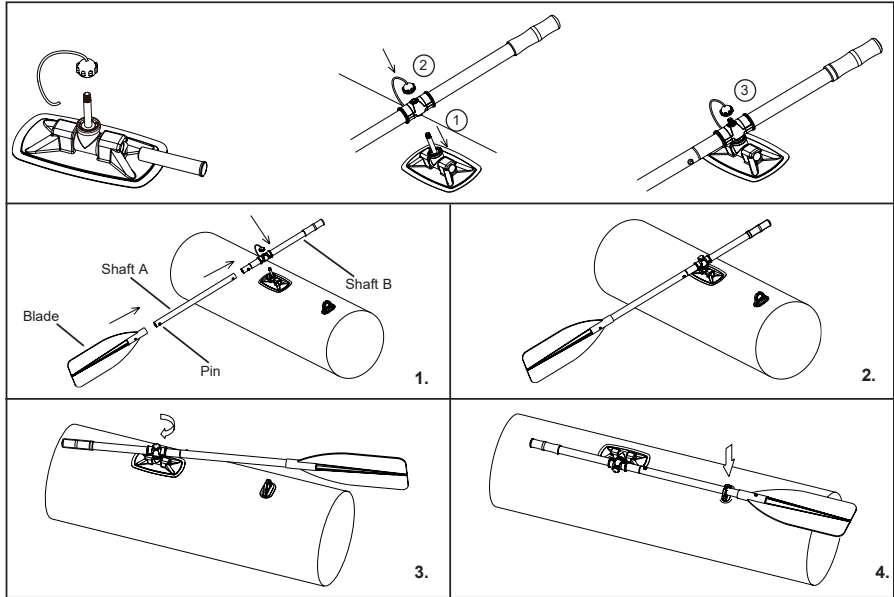
Skeg Installation and Removal



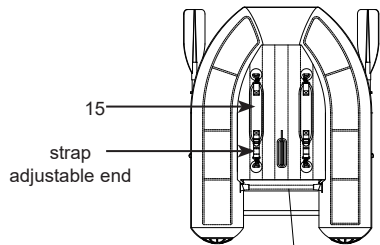
SAVE THESE INSTRUCTIONS

Seat Installation

1. Insert output end of air pump into valve and fill. Inflate until it is stiff to the touch but NOT hard. Do not over inflate or use high pressure compressor.
2. Close the valve cap and place the seat on the velcro strip located on the floor.

Oar Assembly**Carry Strap Installation**

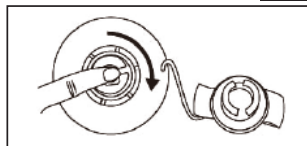
Flip the inflated product over with the bottom facing up. Attach the carry straps to the D-rings and adjust the straps length. Remove the skeg before carrying the product on your back. Re-install the skeg and remove the carry straps before using the product.

**SAVE THESE INSTRUCTIONS**

Deflation

For fishing tube:

1. Unscrew the cap to reveal the stem, push the stem in and turn 90 degree right to secure it in the down position.
2. Once the deflation is completed, push the stem in and turn 90 degree left to return it into the inflation position.
3. Replace the cap back.



Safety and Operating Instructions

Before Departing from the Shore or Dock

Know all required information and inform your passengers:

- Take a safety course and get hands-on training from your dealer or local authorities.
- Know all local regulations and hazards related to water activities.
- Check weather forecast, local currents, tides and wind conditions.
- Advise someone on land of the time you plan to be back at your starting point.
- Learn how to determine the distance you can cover, and remember that bad weather conditions can alter this.
- Review all safety requirements regularly.

Check the working condition of the product and equipments:

- Check inflation pressure.
- Inspect the valves caps.
- Check the load is evenly distributed, fore (front) to aft (back) and side-to-side.

Make sure that all required safety equipment is on board:

- One personal flotation device (PFD) per person.
- Air pump, oars, repair kit and tool kit.
- Any other mandatory equipment.
- Lights are required if operating after dark.

Rules to Observe

- Be responsible, do not neglect the safety rules, this could jeopardize your life and the lives of others.
- Respect local regulations and practices.
- Remember that weather conditions can rapidly deteriorate. Always be sure that you can reach a shelter rapidly.
- Wear a personal flotation device (PFD).
- Do not drink alcohol or take drugs before or while using the product.
- Do not exceed the authorized number of persons or weight.
- Keep clear of swimmers and divers. Always avoid areas where divers/swimmers are in the water.
- Keep a sharp lookout especially when operating near beaches and launch sites. The Alpha flag indicates proximity of divers. You MUST maintain a safe distance as required by your local laws, which may range from 50 meters (164 feet) to 91 meters (300 feet).
- Avoid all contact between the air chambers and sharp objects or aggressive liquids (such as acid).
- Do not smoke on board.

SAVE THESE INSTRUCTIONS

Care and Maintenance

Do not store the product inflated. If you store it in a closet, basement or garage, we suggest you pick a cool, dry place, making sure the product is clean and dry before you store it - or mold can accumulate.

Clean the product after a trip to prevent damage from sand, salt water or sun exposure.

Most dirt can be removed with a garden hose, a sponge and mild soap. Make sure the product is completely dry before storing. Store the product and accessories in a dry, temperature controlled, between 32 degrees Fahrenheit (0 degrees Celsius) and 104 degrees Fahrenheit (40 degrees Celsius) storage location.

Disassembly and Storage

First clean the product thoroughly following the Care and Maintenance instructions. Open all air valves, deflate product completely and remove all the accessories from the product. Fold the left side of the product over and then fold the right side over the left. Fold the bow end twice to the middle of the product tightly while forcing out any remaining air; repeat this procedure for the stern. Replace all air valves' caps. With two opposing folded sides, fold one end over the other like closing a book. The product is ready for storage. Fold the product loosely and avoid sharp bends, corners and creases which can damage the product.

Troubleshooting

If the product appears a bit soft, it might not be because of a leak. If the product was inflated late in the day with 32°C (90°F) air, that air might cool down to 25°C (77°F) overnight. The cooler air exerts less pressure on the hull, so it could appear soft the next morning.

If there has been no temperature variation, you need to start looking for a leak:

- Take a good look at the product from just a few feet away. Flip it over and closely check over the outside. Any large leaks should be clearly visible.
- If you have an idea where your leak is, use a mix of dishwashing liquid and water in a spray bottle, and spray over the suspicious areas. Any leak will produce bubbles that will pinpoint the location of the leak.
- Check valves for leak, if necessary, spray soapy water around the valve and the valve base.

Repairs

Through constant use you may occasionally puncture the product. Most leaks only take a few minutes to repair. The product comes with a repair patch, and additional repair supplies can be ordered from Intex Consumer Service or from our website.

First locate the leak; soapy water will bubble out from the source of the leak. Thoroughly clean the area surrounding the leak to remove any dirt or grime.

Cut a piece of repair patch large enough to overlap the damaged area by approximately 1.5cm (1/2"). Round off the edges, and place the patch on the damaged area and PRESS DOWN FIRMLY. You may want to use a weight on top to keep it in place.

Do not inflate in 30 minutes after patching.

If the patch does not hold, you can purchase a PVC or silicon based glue for repairing camping mats, tents or shoes from your local market, please refer to the instruction of the glue for patching.

SAVE THESE INSTRUCTIONS

Limited Warranty

**96
A**

Your Intex Fishing Tube has been manufactured using the highest quality materials and workmanship. All Intex Fishing Tubes have been inspected and found free of defects prior to leaving the factory. This limited warranty applies to the Intex Fishing Tube only.

This limited warranty is in addition to, and not a substitute for, your legal rights and remedies. To the extent that this warranty is inconsistent with any of your legal rights, they take priority. For example, consumer laws across the European Union provide statutory warranty rights in addition to the coverage you receive from this limited warranty: for information on EU-wide consumer laws, please visit the European Consumer Center website at http://ec.europa.eu/consumers/ecc/contact_en/htm.

The provisions of this limited warranty apply only to the original purchaser. This Limited Warranty is valid for a period of 1 year from the date of purchase. Keep your purchase information with this document, as proof of purchase will be required and must accompany warranty claims or the limited warranty will be invalid.

If you find a manufacturing defect in the Intex Fishing Tube during the warranty period, please contact the appropriate Intex Service Center listed in the separate "Authorized Service Centers" sheet. If the item is returned as directed by the Intex Service Center, the Service Center will inspect the item and determine the validity of the claim. If the item is covered by the provisions of the warranty, the item will be repaired or replaced, with the same or comparable item (at Intex's choice) at no charge to you.

Other than this warranty, and other legal rights in your country, no further warranties are implied. To the extent possibly in your country, in no event shall Intex be liable to you or any third party for direct or consequential damages arising out of the use of your Intex Fishing Tube, or Intex or its agents' and employees' actions (including the manufacture of the product). If your country does not allow the exclusion or limitation of incidental or consequential damages, this limitation or exclusion does not apply to you.

You should note that this limited warranty does not apply in the following circumstances:

- If the Intex Fishing Tube is subject to negligence, abnormal use or application, accident, improper operation, trailering or towing, improper maintenance or storage;
- If the Intex Fishing Tube is subject to damage by circumstances beyond Intex's control, including but not limited to, punctures, tears, abrasions, or ordinary wear and tear;
- To parts and components not sold by Intex; and/or
- To unauthorized alterations, repairs or disassembly to the Fishing Tube by anyone other than Intex Service Center personnel.

Read the owner's manual carefully and follow all instructions regarding proper operation and maintenance of your Intex Fishing Tube. Always inspect your equipment prior to use. This limited warranty will be void if use instructions are not followed.

SAVE THESE INSTRUCTIONS